

Mandated Reporter Training March 2015

Mandated Reporters vs. Permissive Reporters

Mandated Reporters in the Church: paid, non-paid and voluntary personnel who come in contact with children, [anyone who is “*under the care, supervision, guidance or training of [the mandated reporter] or of an agency, institution, organization or other entity with which that person is affiliated.*”] You must have reasonable suspicion that the child under your care has experienced abuse, and this can be second hand information (reasonable suspicion.)

Mandated Reporters - those who must

Permissive Reporters - those who can

Abuse Definitions

Components:

Child is under 18 years of age when abuse occurred.

Perpetrator is 14 years old or older, could be a parent, responsible caregiver (anyone providing care in lieu of parents,) or another individual 14 yrs. or older living in the home.

Act or failure to act that can cause harm to child.

Type of Abuse: Serious Physical Injury

Description: Recent, substantial pain, OR injury that significantly impairs functioning, temporary or permanently.

Behavioral Indicators: Withdraws from others, no expectation of comfort, fear of physical contact, clings to adults, appears depressed or lacks emotion, timid/easily frightened, role reversal

Timeframe: Occurred in past 2 years

Examples: Bruises, pattern marks, human bite marks, attempted strangulation (neck rings), immersion burns, cigarette burns

Type of Abuse: Serious Mental Injury

Description: A psychological condition that is diagnosed by a physician or licensed psychologist that: (1) Renders the child chronically and severely anxious, agitated, depressed, socially withdrawn, psychotic, or in reasonable fear that his/her safety is threatened, OR (2) Seriously interferes with the child's ability to accomplish age-appropriate developmental and social tasks.

Behavioral Indicators: Depression or absence of affect; mental or developmental delays; self-mutilation or other self-injurious behaviors; suicide attempts; compulsive disorders; antisocial behavior; delinquent behavior, alcohol/drug abuse, neurotic traits (i.e. extreme fearfulness.)

Timeframe: Occurred any time before age 18, reportable up to age 20

Examples: Eating Disorder, Anxiety/Panic Disorder, Depression

Type of Abuse: Sexual Abuse or Exploitation

Description: The employment, use, persuasion, inducement, enticement, or coercion of any child to engage in or assist any other person to engage in any sexually explicit conduct or any stimulation of any sexual explicit conduct for the purpose of producing a visual depiction, including photography, videotaping, computer depicting or filming, sexually explicit conduct or the rape, sexual assault, involuntary deviate sexual intercourse, aggravated indecent assault, molestation, incest, indecent exposure, prostitution, sexual abuse, or sexual exploitation of children.

Behavioral Indicators: Verbal disclosure, precocious sexual knowledge, inappropriate sexual behavior, lack of interest or involvement in activities, layered or inappropriate clothing, hiding clothing, generalized emotional distress.

Timeframe: Occurred any time before age 18, reportable up to age 20

Examples: Child may have genital injury, STD, suspicious stains, bladder or urinary tract infections, painful toileting, pregnancy.

Type of Abuse: Serious Physical Neglect

Description: Physical condition that endangers the child's functioning, OR impairs the child's functioning. It must arise from: prolonged or repeated lack of supervision, OR failure to provide the essentials of life* including adequate medical care.

Behavioral Indicators: Out of control behavior, stealing/begging, medical issues, school absence

Timeframe: Occurred any time before age 18, reportable up to age 20

Examples: Failure to thrive, positive toxicology (hospital), delays in physical development, persistent hunger, poor hygiene, speech disorders, consistent lack of supervision, unattended physical problems or medical needs, chronic truancy, abandonment, inappropriate dress.

Type of Abuse: Imminent Risk

Description: Pertains to serious physical injury or sexual abuse and exploitation. Recent act or failure to act on behalf of caregiver. Takes into account: Happenstance, third party intervention, actions of the child.

Behavioral Indicators: Child may be oblivious or over cautious/fearful

Timeframe: Occurred in past 2 years

Examples: Parent throws a hammer at child, hammer misses child because child ducks. Father shoots gun, misses kid. Child in room with sexual offender, child escapes. Two year old walking down street alone.

Essentials of Life:

Food

Clothing

Medical Care

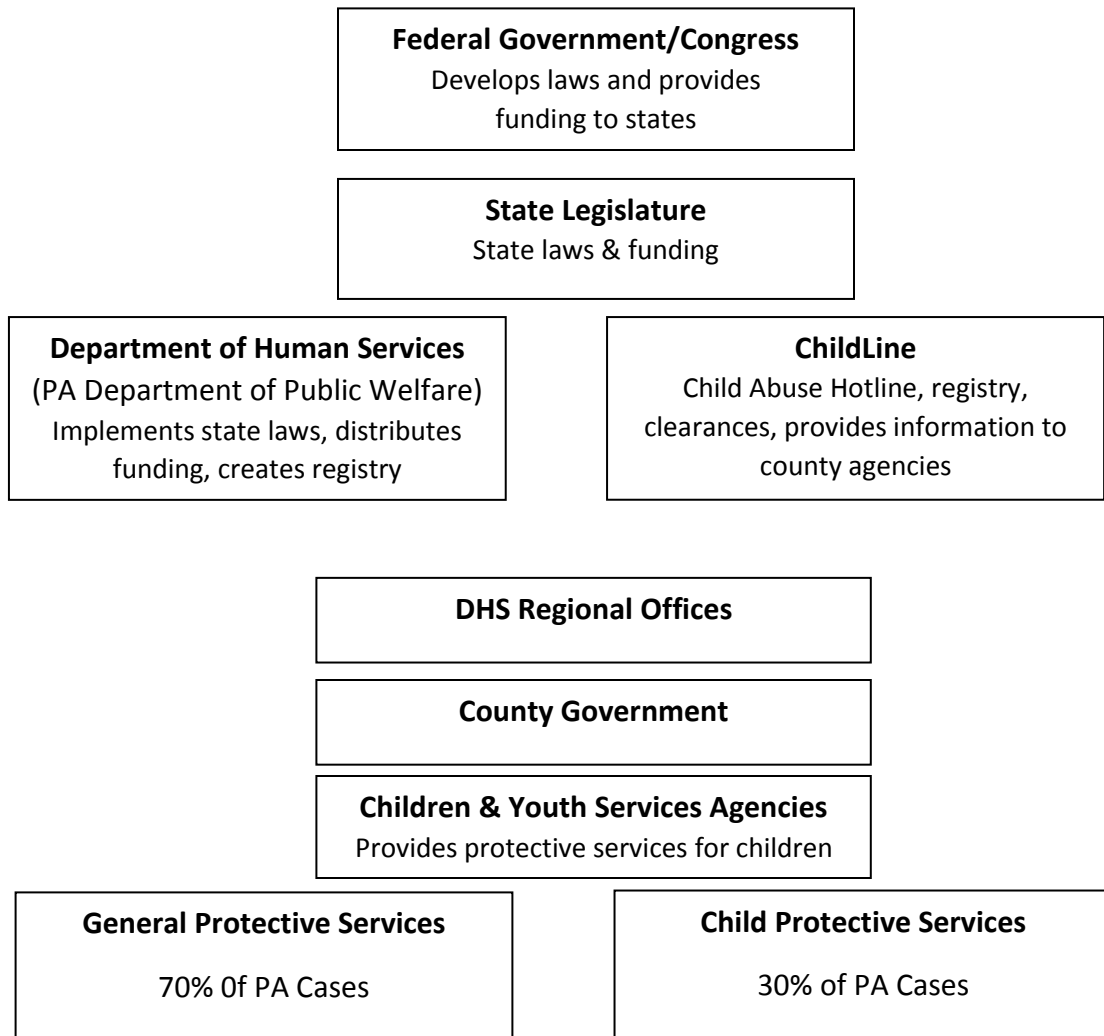
Protection from harm

Shelter

Supervision

Education (as required by law)

Child Welfare Services by Design



Changes in reporting:

YOU make the call, not an administrator.

Immediately call ChildLine, then notify supervisor/church administrator.

Use CY-47 Form – forward to appropriate county agency within 48 hours.

Online or telephone reports (As of January 1, 2015.)

Reporting Exposure

Teach your staff & volunteers as to how a report is made:

1. Telephone to ChildLine at 1-800-932-0313, or
2. Online at the Child Welfare Portal, <https://www.compass.state.pa.us/cwis/public/home>.
3. Follow up with CY-47 Completion

Either avenue will utilize the CY-47 Form in regard to content. Reduce the intimidation factor, increase familiarity of reporting options, stress prompt action.

Simulated call.

Understanding the process & risk assessment by Department of Human Services (Children & Youth.)

Legal Considerations “The fine print”

1. Penalties increase. Failure to report is a third degree felony. First offense is 1 year in prison and/or \$2,500 fine. Second offense to report is a second degree felony with 2 years in prison and /or up to \$5,000 fine.
2. You are immune from civil or criminal liability when you report. Your information will be held confidentially by Child Protective Services.
3. As a mandated reporter, you have a right to receive outcome of report. ChildLine will send information to you.
4. Determinations include: unfounded, indicated, and founded.
 - a. Unfounded: No evidence or insufficient evidence.
 - b. Indicated: Substantiated through admission, medical evidence, evidence collected in the investigation.
 - c. Founded: Courts have decided the child was abused.
5. There is new legislation that will determine how often clearances need completed and what type of clearances are needed:
 - a. State Police Record Check
 - b. Child Abuse Clearance Check
 - c. FBI Clearance (employees & volunteers) OR sworn statement (volunteers who are 10 yr. residents of PA) that no felony has been committed under the Controlled Substance, Drug, Device and Cosmetic Act, nor has there been involvement in a child abuse investigation, as a perpetrator or for failing to report.

6. If one is arrested for an offense that would eliminate participation in a children/youth program, notification to an administrator, in writing, no later than 72 hours after the arrest.

Resources:

Employee Clearances information

http://www.dhs.state.pa.us/cs/groups/webcontent/documents/document/c_135246.pdf

Volunteer Clearances information

http://www.dhs.state.pa.us/cs/groups/webcontent/documents/document/c_135249.pdf

CY-47 (reporting form)

http://services.dpw.state.pa.us/oimpolicymanuals/manuals/bop/ca/CY_47.pdf

Clearance information (listings, online sources, turn-around time)

<http://www.dhs.state.pa.us/findaform/childabusehistoryclearanceforms/index.htm>

<http://pfq.org/hr/help/clearances.asp>

Training requirements (licensed)

<http://keepkidssafe.pa.gov/training/index.htm>

Family Support Alliance

<http://www.pa-fsa.org/>

Changes to the Child Services Protective Law (Title 23) by Family Support Alliance

<http://www.pa-fsa.org/assets/mandated-reporters/Updated%20ChildProtective%20Services%20Law.pdf>

Keep Kids Safe

<http://keepkidssafe.pa.gov/>

Darkness to Light

www.darknesstolight.org

Stop It Now

<http://www.stopitnow.org/>

Child Lures Prevention

<http://www.childluresprevention.com/>

Teen Lures Prevention (talking with teens)

<http://www.teenluresprevention.com/index.htm>

Just Tell

<http://www.justtell.org/>

GRACE - Godly Response to Abuse in the Christian Environment (G.R.A.C.E.)
<http://netgrace.org/>

Additional Church Resources (Insurances):

Church Mutual Insurance Company
<https://www.churchmutual.com/index.cfm> (Choose Safety Resources)

Brotherhood Mutual Insurance Company
<http://www.brotherhoodmutual.com/> (Choose Resources)

Church Underwriters, Inc.
<http://www.chuund.com/> (Choose Resources)

GuideOne Insurance Company
<https://www.guideone.com/> (Choose Churches then Safety Resources)

United Church of Christ Insurance Board
<http://www.insuranceboard.org/> (Choose Safety Solutions)

Southern Mutual
<http://www.smcins.com/> (Choose Resources)